

**KYOcount**

FLEET MONITORING AND SYSTEM MANAGEMENT

GET BETTER INPUT TO **MANAGE**  
**YOUR OUTPUT.**

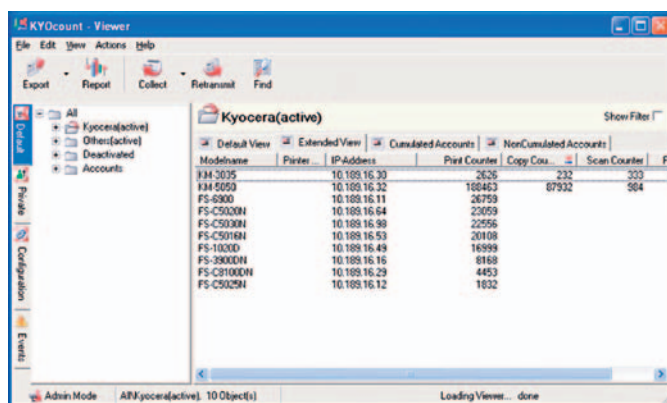


 **KYOCERA**

# MAKE INFORMED DECISIONS.

## GETTING AN ACCURATE PICTURE OF RESOURCE USAGE

Having a complete overview of your company's fleet is the vital first step for proper resource allocation and cost accounting. KYOcount 4.0 will not only find and inform you about all of your



The screenshot shows the KYOcount - Viewer application window. The main area displays a table of printer information for 'Kyocera(active)'. The table has columns for Modelname, Printer, IP-Address, Print Counters, Copy Cou., and Scan Counter. The data is as follows:

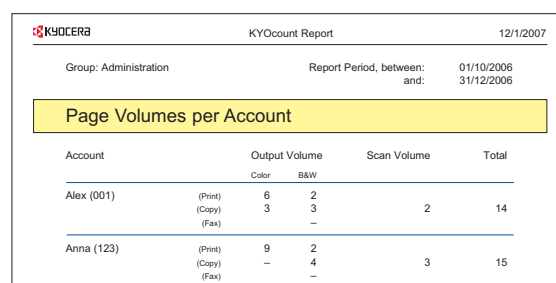
Modelname	Printer	IP-Address	Print Counters	Copy Cou.	Scan Counter
IHM 5075		10.100.16.30	2635	232	303
IHM 5050		10.100.16.32	100463	67932	504
FS-6900		10.100.16.11	26759		
FS-C5020N		10.100.16.64	23059		
FS-C5030N		10.100.16.80	22556		
FS-C5016N		10.100.16.53	20108		
FS-1000D		10.100.16.49	16599		
FS-3900DN		10.100.16.16	6168		
FS-C8100DN		10.100.16.29	4453		
FS-C8025N		10.100.16.12	1632		

network printers, copiers and multifunctionals, it will even give you all relevant information on locally connected devices\*. That way your reports will include the volume of all prints, copies, scans and faxes carried out in your company. And you can receive that information on a daily, weekly or monthly basis – or even in real time.

\*Requires that a printer be connected to a PC using Windows® 2000, 2003 or XP.

## TURNING DATA INTO INFORMATION

Whatever is relevant for you and your company, KYOcount will collect the information you need – in the categories important to you. Whether it is the volume of printouts, copies, scans or faxes, the number of b/w and colour prints or how much work is done in A3, A4 or A5, account-related filter criteria let you collect the information in account groups. KYOcount 4.0 has also added new reports for detailed account analysis and comprehensive overviews, enabling precise accounting and equally precise planning – from supply purchasing to device usage.



The screenshot shows a KYOCERA KYOcount Report for the date 12/1/2007. The report is for the 'Administration' group, covering the period from 01/10/2006 to 31/12/2006. The main section is titled 'Page Volumes per Account' and contains the following data:

Account		Output Volume		Scan Volume	Total
		Color	B&W		
Alex (001)	(Print)	6	2	2	14
	(Copy)	3	3		
	(Fax)				
Anna (123)	(Print)	9	2	3	15
	(Copy)		4		
	(Fax)				

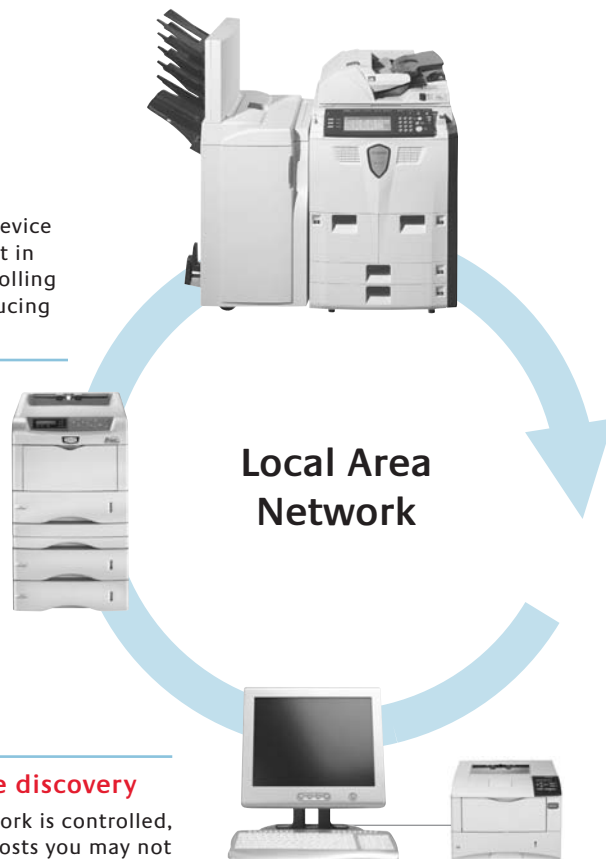
Tracking, analysing and managing costs is an essential procedure in any business. KYOcount automates the entire process for you – not just for your Kyocera devices, but for all of your networked and local printers, copiers and multifunctionals. That does not only mean highly precise cost accounting, it also saves time, leaving you free to analyse the results and apply business sense to fleet management. For increased efficiency, KYOcount can also be linked to your Service Partner, enabling a proactive approach to consumables and maintenance management.

### Easy accounting, customised reporting

Counter data is not simply collected, it is prepared and presented according to your requirements. You create account groups and decide on viewing criteria such as cumulated and non-cumulated tabular views.

### Real-time detection

Detection and processing of device status transitions is carried out in real time, avoiding frequent polling for status monitoring and reducing network traffic.



### Advanced notification facility

Event notification is completely flexible so that one notification can be sent by email to multiple recipients and each recipient can be selected for one or for multiple events.

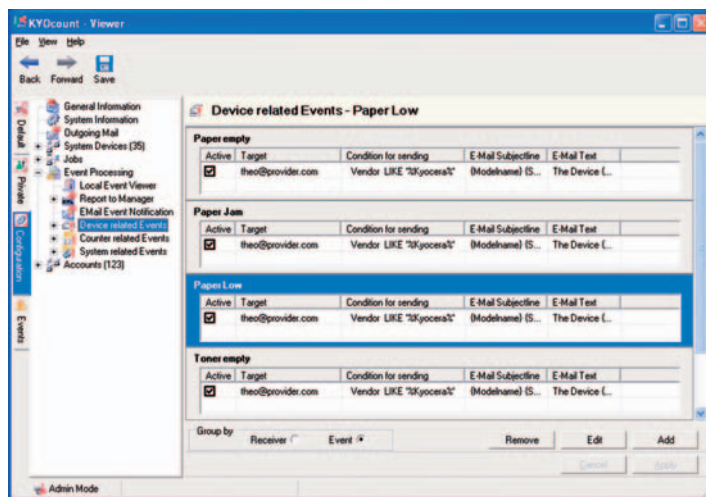
### Automatic device discovery

The entire print network is controlled, thereby uncovering costs you may not have known existed. The Basic Licence enables you to monitor an unlimited number of devices in your network.



## KEEPING THE PROPER PEOPLE INFORMED

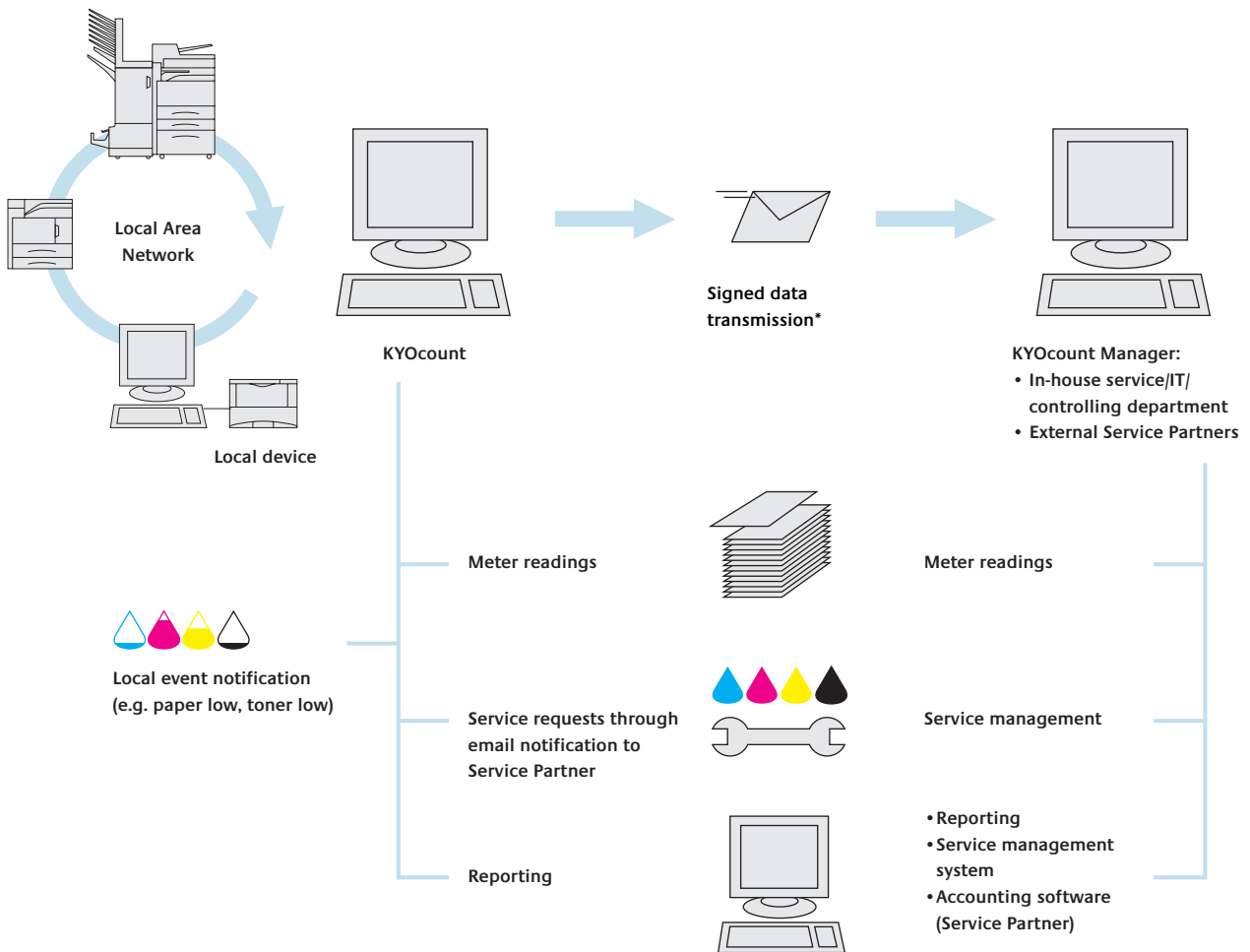
KYOcount simplifies the entire administration process. And thanks to the customisable email notification offered by KYOcount 4.0 this whole process has become even more efficient.



Downtimes can be effectively reduced by simply configuring the system to email a network manager or other designated person when, for example, toner or paper levels are low. And by providing detailed figures on the use of your company's fleet, downsizing, upsizing and the redistribution of devices to ensure their effective use becomes so much simpler.

## MAKING THE TRENDS VISIBLE

Even the most precise figures require meticulous analysis. KYOcount is the tool that you need. Not only is the data divided into categories of your choice, KYOcount will also help you to prepare individual reports by choosing the graphs you need. And KYOcount 4.0 will also deliver device/account counter history reports for a quick and precise trend analysis and a more effective presentation. All data is available as a PDF, RTF, XML or CSV file so that transferring the data to other programs, such as Enterprise Resource Planning applications, is trouble free.



\*Signed data transmission via email (XML) to the KYOcount Manager, automatic or manual, according to your individual settings.

**Minimum system requirements:**

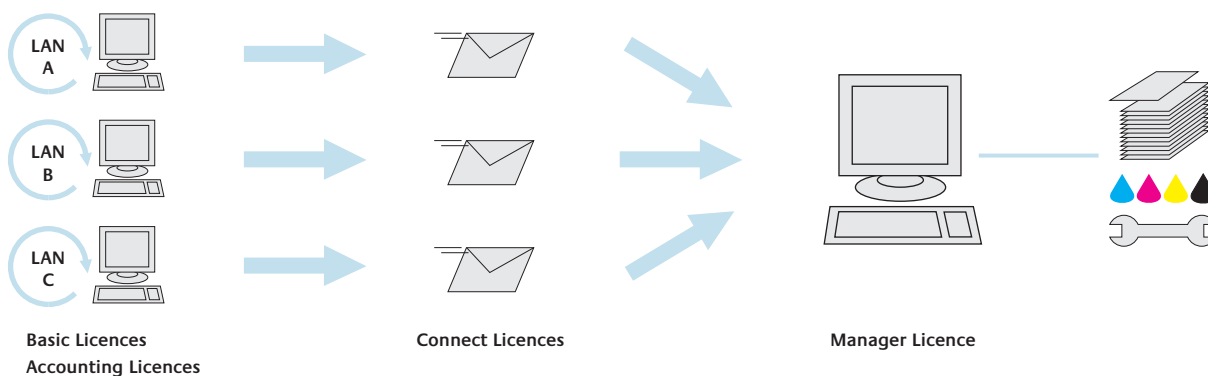
Hardware to host KYOcount and KYOcount Manager: IBM PC-compatible computer with 1 GHz CPU or better, 512 MB RAM, 300 MB of free disk space, CD-ROM drive for installation. Software: Windows® 2000, Windows® 2003, Windows® XP or Windows® Vista operating system, Microsoft® .NET framework 1.1

## GLOBAL THINKING AND OUTSOURCING

Companies that work nationally or on an international level with centralised purchasing activities can now have notifications from all branch offices sent to the appropriate person, wherever they are located. If outsourcing is an option, the necessary notifications may also be sent to a selected Service Partner, thereby automating almost the entire servicing and maintenance process.

# FREE KYOcount TRIAL OFFER.

Now you can test KYOcount for 30 days free of charge. The test includes unlimited use of all functions, regardless of how many devices your company operates. And thanks to the Manager Licence, your Service Partner will be able to show you how effective a complete service set-up is. So get in touch with your Kyocera Service Partner today.



**Basic Licence:** for problem-free fleet monitoring and system management of all your network and local printers, copiers and multifunctionals.

**Accounting Licence:** enables discovery of device-based accounts and the use of account management functions (only for Kyocera devices that support accounting functionalities).

**Connect Licence:** enables KYOcount system reports to be sent to a KYOcount Manager system.

**Manager Licence:** enables the designated internal KYOcount service/IT administrator or your external Service Partner to receive and manage KYOcount system reports. Only one licence is necessary, regardless of how many Basic and Accounting Licences you have to manage.

Your Kyocera Business Partner: