



MULTIPLE PRINTING OPTIONS HAVE ONE MASTER.

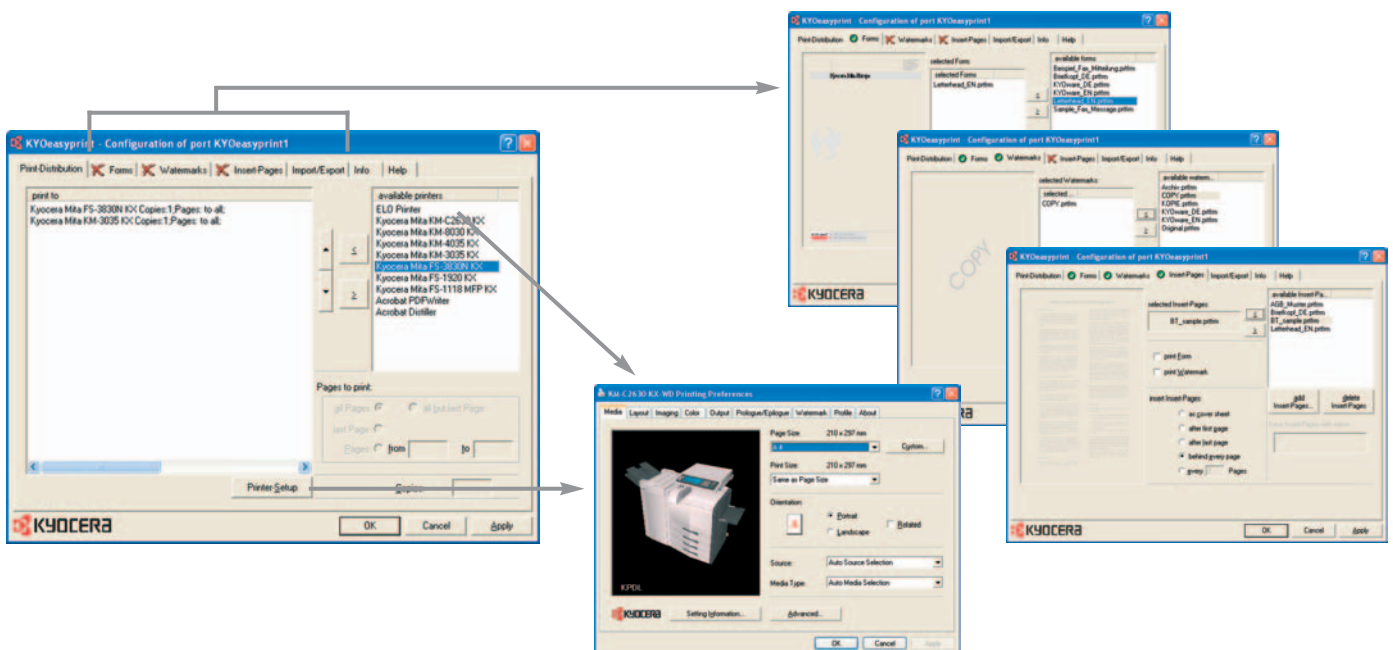


COMPLEX PRINTING MADE EASY.

KYOeasyprint does exactly what it promises to do: it makes complex printing easier and reduces costs at the same time.

KYOeasyprint allows you to:

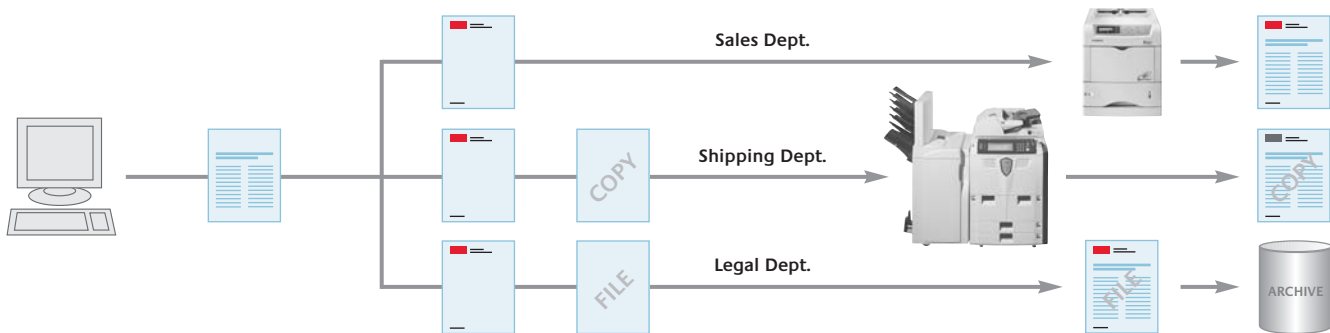
- Select different paper sources and paper finishing options in one go
- Generate electronic forms, overlays and text components
- Create multiple watermarks and use them in a variety of documents
- Add text and graphic components
- Print in one go on multiple devices (such as printers and multifunctionals) and in a variety of formats
- Cluster your devices to speed up your output



In a fast paced and immediate office environment, it is of paramount importance to produce specific documents for specific purposes in the shortest amount of time possible. Nevertheless, it can be difficult as well as time consuming for the individual to prepare one document for a number of different recipients. Apart from physical delivery, watermarks, text additions and form overlays must be taken into consideration. KYOeasyprint is a versatile solution, which makes specific document output and management easier and faster than ever.

THE WAY IT WORKS

For example, you have to produce an invoice which has to be delivered to all the relevant departments in your company.



- Define which printers will print the document and how each document will be finished (separated, collated, stapled, etc.)

(Your invoice is sent to the colour printer for the sales department, to the monochrome printer for the shipping department and to the archive of the legal department.)

- Define which custom-made watermarks are allocated to which documents

(i.e. the sales department printer produces the invoice with a watermark labelled 'for internal processing', the tiff virtual printer for archiving purposes and the colour printer has an 'original' watermark.)

YOUR BENEFITS

This versatile tool can not only optimise workflow in general but also

- eliminate the cost of stationary forms
- eliminate costs associated by misprints and repeat prints
- speed up the delivery of documents to various recipients
- can be used by a wide variety of staff without special training as soon as jobs or workflows are created

The latest product updates are available at www.kyoware.com

A **UNIQUE** APPROACH FROM A **UNIQUE PROVIDER.**

IMPROVED SYSTEM INTEGRATION

Easy to use network integration and management substantially reduces maintenance costs.

ADVANCED USABILITY

One unique proven user interface is available for all windows based operating systems.

FUNCTIONS TAILOR-MADE TO CUSTOMER REQUIREMENTS

Innovative functions provide solutions for ambitious customers ranging from small businesses to large enterprises.

SECURE CUSTOMER INVESTMENT

Integration into customer IT environments, supporting various professional requirements, is as easy as never before.

REDUCED TOTAL COST OF OWNERSHIP

Kyocera's already low TCO (Total Cost of Ownership) is reduced even further.

www.kyoware.com

Your Kyocera Business Partner: